

# ARCHITECTURE+DESIGN

A N I N D I A N J O U R N A L O F A R C H I T E C T U R E



## THE POWER OF COLLABORATION

Ashiesh Shah *The Craft Revivalist* ■ Vinita Chaitanya *The Eclectic Maximalist*

MAGZTER

# CONTENTS

— ARCHITECTURE+DESIGN —



78



84



56

## THE COLLABORATION SPECIAL

- 56 **A Sacred Aura in a Royal House**  
Pilibhit House, Haridwar  
*Designers Group in Collaboration with Pradeep Sachdeva Design Associates*
- 64 **Material Melange**  
Bibelot, Mumbai  
*Open Atelier Mumbai in Collaboration with Artist Rutuja Padwal*
- 70 **A Lively Urban Ensemble For Artistic Expression**  
Farfetch Hq / Fuse Valley, Portugal  
*Bjarke Ingels Group (BIG)*
- 78 **Earthy Edifice**  
House of Courts (Lopez Design Studio), Gurugram  
*Dada & Partners In Collaboration with ALCOI INDIA*

- 84 **A Taste of Vietnam**  
Nho Saigon, Mumbai  
*Muselab in Collaboration with Jetsons*
- 90 **Human-Centric Lighting Design For A Forward Thinking Home**  
Todd Residence, Gurugram  
*Architects: CitySpace' 82 Architects, India; Interior Designer: Habitat Architects, India; Lighting Designer: Lightbook*

- CONCEPT**
- 96 **Smooth Transit**

 MAGZTER

THE  
COLLABORATION  
SPECIAL

# MATERIAL MELANGE

**Project:** Bibelot, Mumbai

**ARCHITECTS:** OPEN ATELIER MUMBAI IN COLLABORATION WITH ARTIST RUTUJA PADWAL

The project designed by Open Atelier Mumbai in collaboration with artist Rutuja Padwal is an aesthetic home with juxtaposing design styles that cohesively embraces the choices and lineage of each member for united living.



MAGZTER



The project is an abode for a family of juxtaposing choices that are amalgamated together. Nestled in the queen of Mumbai's suburbs, Bandra, the space is home to a family with diverse Jewish, Maharashtrian and Muslim roots. Professionally, one of them is a renowned celebrity and an event manager. Conjugating all the traits, the home narrates urban lives by reflecting the identity of all its inhabitants, juxtaposing co-existing styles harmoniously and serving as an ode to their rich and multi-faceted lineage. Each area and corner is unique, and each element is a well-thought-out marvel.

The living room of this three-bedroom apartment basks in the cultural representation of the Maratha and Rajput design styles. The orange *jharokha*, fitted with a mirror, adds depth and character to the space, complemented by the earthy-toned furniture in deep green and browns. Toning down the space is the textured concrete ceiling and floor that allow the exquisite peacock painting on the wall to take centre stage. In contrast, the concrete floor is intricately detailed with liquid metal to shape a striking flooring pattern that adds drama to the overall setting.

A subtle flow of the cultural language flows into the dining space, which dons an ornate dining table



The living room of this three-bedroom apartment basks in the cultural representation of the Maratha and Rajput design styles. The orange *jharokha*, fitted with a mirror, adds depth and character to the space, complemented by the earthy-toned furniture in deep green and browns.



**FLOOR PLAN**

- |                       |                        |
|-----------------------|------------------------|
| 1. LIVING/DINING ROOM | 6. SON'S BEDROOM       |
| 2. KITCHEN            | 7. SON'S BATHROOM      |
| 3. UTILITY AREA       | 8. DAUGHTER'S BEDROOM  |
| 4. MASTER'S BEDROOM   | 9. DAUGHTER'S BATHROOM |
| 5. MASTER'S BATHROOM  |                        |

and a delicate console in orange hues. Classic black chairs with rattan bases complete the retro-meet-art deco dining space with a solid textured grey wall, detailed with piping and cornices. The kitchen is a piece of art, a juxtaposing section with classic wooden cabinets shutters, white brick-like dado tiles and Warli art engraved on the shutters below the counter. Portraying Maharashtrian culture art, the shutter is a three-dimensional tectonic sculpture in stone finish milled on a CNC, an exquisite piece of art in itself.

Adapting another contrasting visual language and vocabulary, the master bedroom is an amalgamation of art-deco and bohemian design styles. A playful collaboration of a vivid colour scheme includes shades in poppy pink, egg whites and a delectable blue. The hues are accentuated with cornice details, drop lamps and vein coding panels. Sharply standing out is the circular embedded ceiling in a burnt orange that adds a warm retro feel to the space, while flamboyantly defragmenting the design language. Breaking the solidity of the walls is the distinct capsule-shaped cut-out that offers glimpses of the white and green shower tiles of the bathroom. The room is a personification of the inhabitant's vibrant personality that is hard to miss and can be defined by one singular style.

The other room in the house tells another distinct



MAGZTER

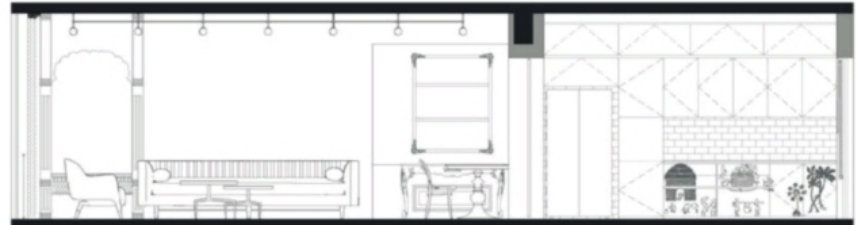
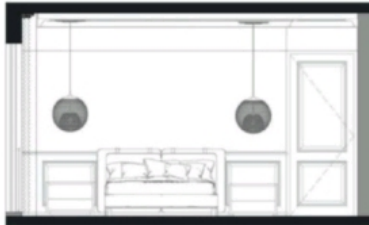


Clipped from - [Architecture + Design](#) - February 2022  
Read it digitally on the Magzter app



In its entirety, the collaboration with artist Rutuja Padwal effortlessly explains this home as an aesthetic oxymoron, a flux of experiences that cause a rush of different emotions. The power in her strokes and use of colour, for example, the vibrant orange, brings out the facets of the family members' personalities, which was essentially the design intent.





ELEVATIONS

story, one that is contemporary and rooted in the organic style. Belonging to the client's daughter, the room is made with an exposed ceiling adorned with textured concrete patterns, a detailed cornice running along the edges and a rustic chandelier. One surface of the room is made up of wardrobes that are made with polished timber shutters and rattan screens, imported from the local market in Oshiware.

Materially, the home exhibits different experiments, all unique in character. However, the extraordinary 'Top Flex' flooring by Italian company San Marco steals the show. The micro concrete surface is unlike the more common IPS flooring which is glossy and prone to cracking and instead is matte in effect and creates a distinctive character. On top of the concrete, liquid metal is seamlessly incorporated to achieve eclectic patterns and motifs that run across the house, basking it in an exquisite characteristic that creates visual impact.

In its entirety, the collaboration with artist Rutuja Padwal effortlessly explains this home as an aesthetic oxymoron, a flux of experiences that cause a rush of different emotions. The power in her strokes and use of colour, for example, the vibrant orange, brings out the facets of the family members' personalities, which was essentially the design intent. Moreover, an artistic perspective from Rutuja brings contrasting design styles together yet is fresh and imaginative. Her personal touch renders the harmony, and cohesively embraces every space to become a haven for united living. ✚

Photo credit: Prashant Bhat

**FACTFILE**

**Principal architect:** Rahul Mistri  
**Design team:** Parth Soni, Sanjana Goel, Mahesh Chalke  
**Site area:** 1400sq ft  
**Year of completion:** 2020

